


**New Enterprise
Rural Electric
Cooperative, Inc.**

A Touchstone Energy® Cooperative 



*One of 14 electric
cooperatives serving
Pennsylvania and
New Jersey*

3596 Brumbaugh Road
P.O. Box 75
New Enterprise, PA 16664-0075
814/766-3221 • 1- 800-270-3177
FAX 814/766-3319
Website:
www.newenterpriserec.com

BOARD OF DIRECTORS

- Leroy D. Walls, President**
- Harry Johnson, Vice President**
- John R. Dively, Secretary**
- Robert Guyer, Asst. Secretary**
- Dean Brant, Treasurer**
- David Bequeath**
- Timothy Newman**
- Ellis Sollenberger**

OFFICE HOURS

**Monday through Friday
7 a.m. - 3:30 p.m.**

EMERGENCY OUTAGE NUMBER

**814/766-3221
1-800-270-3177**

FROM THE MANAGER/CEO

Your linemen thank you!



Rick L. Eichelberger
General Manager & CEO

A COUPLE months ago, most of Pennsylvania experienced a windy event that lasted about 24 to 30 hours. If you recall, a steady wind of about 40 to 50 miles per hour with higher wind gusts hit our area. Every member of our system had blinks or outages during the event. Our line crews spent about 18 hours straight restoring

power from one end of the system to the other.

Fallen trees or limbs, along with flying roofs, caused most of outages. The power supply through the Penelec lines caused an outage to all our accounts from the Happy Hollow Restaurant area in Liberty Township to the Tatesville area of Hopewell Township. Another widespread outage was caused by a tree falling onto the power line in Waterfall that caused all the accounts from Saltillo to the Hustontown area to be off. Many other isolated locations had outages, too.

Restoring power is a coordinated process of gathering information from those who call the outage in to dispatching crews to specific areas to finding the exact location of the problem in the field. One of your linemen suggested that I

find a way to thank our members for getting the message to them when they know where trees are lying on the power lines or where poles are broken, etc.

So, from all our linemen to any member who has given vital information in finding the cause of a power outage, we thank you and want you to know your help is appreciated. Any time we can go directly to the cause of an outage, it saves time in the restoration process. Using the example of the trees on the power line in Waterfall, a member saw the trees and gave the information directly to the linemen in the field. This information saved the time it would have taken to search a seven-mile section of line between Saltillo and Waterfall.

Please continue to give critical information when reporting your outage. Trees on the lines, wires lying on the ground, broken poles, sparking or arcing, low wires or loud noises at your transformer are all pieces of information that can help the lineman respond and restore the electric service. And always remember to stay away from these situations. They are dangerous and they can only be repaired by trained linemen using special equipment. We always welcome your eyes and ears, but we never want your safety to be jeopardized. ☀

The co-op commitment to affordable power

EACH MONTH, you budget for your phone, electricity, house and car payments. Generally you know how much each bill will cost and plan your spending accordingly. But what if you couldn't control your energy costs? What if each month they climbed beyond your reach?

At New Enterprise Rural Electric Cooperative, Inc. (REC), we deliver affordable power to you every day. It's why electric cooperatives were created, and it's a commitment we plan to keep. But national energy legislation could force prices higher than many consumers can afford, effectively taking us back to the dawn of the 20th century.

In the 1920s and early 1930s, central station electric service was a luxury that only 10 percent of rural residents nationwide enjoyed — and those who had power paid dearly for it. When Franklin D. Roosevelt visited Warm Springs, Ga., in 1924, he was dismayed to find electricity for his small cottage cost four times what it did at his estate in New York. After being elected president, he created the federal Rural Electrification Administration by executive order to make power affordable for all Americans. As a result, electric co-ops were born.


Innovations in line building pioneered by co-op engineers and the competitive pressure co-ops placed on investor-owned utilities to serve rural areas slashed the cost of providing electric service in the countryside by 50 percent or more. In the decades since, co-ops have established a proven track record of offering stable and affordable electric rates. Data from the U.S. Energy Information Administration (EIA), in fact, shows that since 2000, co-op electric rates have consistently run lower than the industry average. This is fur-

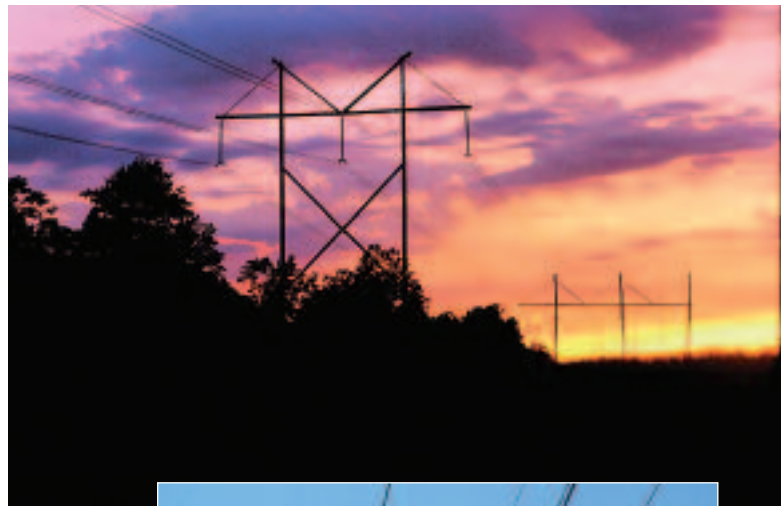
ther proof that we're committed to keeping electricity bills within your means.

But the struggle for affordable power that farmers and their neighbors fought three-quarters of a century ago has flared up again. When adjusted for inflation, EIA predicts the price of electricity for residential consumers will climb 14.6 percent by 2030 — but federal energy and climate change policy will likely impact energy prices further. Electric cooperatives are needed once again to make sure affordable power will be available in 2030 and beyond. Our job, on your behalf, is to work closely with Congress to find the best solutions for addressing climate change while keeping the price of electricity within your means.

New Enterprise REC remains committed to providing you with safe, reliable and affordable power —but we need your help. Through the "Our Energy, Our Future"[™] grassroots awareness campaign, co-op members across the nation are speaking out about the importance of keeping electric bills affordable. New energy and climate change policies being debated in Congress could turn your monthly budget upside-down. Now is the time to ask our elected officials: Will you please work with electric cooperatives to be sure public poli-

cy meets my need for affordable electricity?

Visit www.ourenergy.coop today and send an email to your elected representatives sharing your concern. 



Our Energy, Our Future
A Dialogue With America

Investments in efficiency deliver strong returns

BY MEGAN MCKOY

IN TODAY'S troubled economic climate, people are searching for places to sock away money that offer the promise of a healthy return. While no one can predict when, or if, the stock market will fully recover, crunching a few numbers does show one safe investment alternative: energy efficiency.

Even in good financial times, the annual Wall Street return on stocks averages 14 percent, followed by 4.2 percent for 30-year bonds and 3.5 percent for money market accounts. In comparison, incorporating 10 home efficiency measures carries a 16 percent rate of return, according to the U.S. Department of Energy Home Energy Saver program.

Looking at it another way, the energy bill for a typical American home averages \$1,283 per year, while a home that has purchased and installed energy star products spends just \$774. That's a savings of more than \$500 annually, a nice profit for smart and efficiency-savvy investors to take to the bank. Even better, you get to keep the money you save on your electricity bill; normal investment incomes are taxed heavily.

The first two energy efficiency areas to invest in — those with the highest rates of return — are lighting and sealing ducts. Upgrading to compact fluorescent lightbulbs (CFLs) and fixtures in a typical home costs about \$200, but with an annual savings of \$80, the initial investment pays for itself in 2.5 years with a 41 percent rate of return. Proper duct sealing, which can cost up to \$250, pays for itself in 2.6 years and matches lighting's high rate of return.

Your next purchase should be an Energy Star front-loading clothes washer. Even though one costs an average of \$194 more than a non-efficient model, you reap a 37 percent rate of return — allowing you to recoup the extra expense in less than three years.



BRIGHT IDEA: By replacing incandescent bulbs with compact fluorescent lightbulbs, consumers receive a 41 percent rate of return, with the initial investment of approximately \$200 paid off in two and one-half years.

A programmable thermostat provides another boost to your bottom line. With a 30 percent return, it pays for itself through energy savings in 3.7 years.

A water heater tank wrap with an R-12 insulation rating should be your next step; the initial cost of \$85 saves you \$23 every year, offering a 28 percent return on your investment. An Energy Star refrigerator, heat pump and dishwasher follow with rates of return ranging from 18 percent to 27 percent. Finally, adequate air sealing and increasing wall and attic insulation offer between an 8 and 9 percent return.


To find out how you can start investing in your home's efficiency, visit HomeEnergySuite on our website: www.newenterpriserec.com

You can learn about local promotions for energy star appliances — and save even more — by using

the rebate finder at www.energystar.gov.

Meanwhile, Touchstone Energy® Cooperatives offer efficiency programs at www.touchstoneenergysavers.com, including Touchstone Energy Home (a set of nationally recognized standards for building efficiency), a Home Energy Savings Guide, a Lightbulb Energy Saver calculator showing how much money you can save by using CFLs, and Seal the Deal, a do-it-yourself video showing how to effectively seal your home to lower heating and cooling costs. ☀





Energy Efficiency
Tip of the Month

Use a programmable thermostat to vary your home's temperature based on your schedule. Lower your thermostat when you're not home or at night to save as much as 10 percent on heating and cooling costs!

Source: U.S. Department of Energy

KIDZCORNER

Thinking green

Go on a packaging scavenger hunt

How much packaging is used to wrap the foods you eat? Go on a packaging scavenger hunt at your local grocery store. Make a list of the foods you find with no wrapping, one, two, three or more wrappings. The best place to find foods with no wrapping is the fruit and vegetable section.

Recycling facts

➡ Glass never wears out - it can be recycled forever.

➡ Americans throw away enough steel every year to build all the new cars made in America.

➡ Recycling one glass bottle saves enough electricity to light a 100-watt bulb for four hours.

➡ Americans use 4 million plastic bottles every hour!

What comes into your minds when you think of garbage, trash or litter? The most common thoughts are gross, yucky, smelly stuff. It's the junk we consider worthless. It is the "stuff" we throw away. It is the "stuff" filling up our landfills.

Each week, the garbage truck comes rumbling down the road to pick up our worthless junk. Imagine what would happen if this truck didn't come? How long would it take before your house would be filled with yucky, smelly trash?

Some of our garbage isn't really worthless, but rather reusable, recyclable material. If you buy things that can be used over and over instead of buying disposable items, you will be saving natural resources. Not only will you be helping the landfills, you will be saving energy used to produce these items and reduce pollution.



When your family goes shopping, think about taking cloth bags with you. Only about 700 paper bags can be made from one 15-year-old tree. A large grocery store can use that many bags before lunch! Plastic bags start out as either oil or natural gas. Oil and natural gas are not renewable resources. When they are used up, they are gone forever.

If you don't have cloth bags, save the plastic bags from your previous trips to the store and reuse them. The plastic bags make great small trash can liners. Many stores have a bin where you can recycle plastic bags.

We all produce garbage, but we can also be part of the solution. It's all about making wise choices. When we reduce what we buy, reuse things instead of getting new ones and recycle, we not only make less waste, we also save natural resources and create less pollution.

Help celebrate Earth Day on April 22 by starting to think about reducing, recycling and reusing.

What does a frog order with its burger?

Answer:
A packet of jumbo flies and a diet croak!

Two flies are on the porch. Which one is the actor?

Answer:
The one on the screen.