

New Enterprise Rural Electric Cooperative, Inc.

A Touchstone Energy® Cooperative 



One of 14 electric cooperatives serving Pennsylvania and New Jersey

3596 Brumbaugh Road
P.O. Box 75
New Enterprise, PA 16664-0075
814/766-3221 • 1-800-270-3177
FAX 814/766-3319
Website:
www.newenterpriserec.com

BOARD OF DIRECTORS

- Leroy D. Walls, President**
- Harry Johnson, Vice President**
- John R. Dively, Secretary**
- Robert Guyer, Asst. Secretary**
- Dean Brant, Treasurer**
- David Bequeath**
- Timothy Newman**
- Ellis Sollenberger**

OFFICE HOURS

**Monday through Friday
7 a.m. - 3:30 p.m.**

EMERGENCY OUTAGE NUMBER

**814/766-3221
1-800-270-3177**

FROM THE MANAGER/CEO

Interested in a seat on your co-op board?



Rick L. Eichelberger
General Manager & CEO

MORE THAN 70 years ago, local residents wanted the convenience of electricity. However, private power companies weren't interested in providing power to these rural people. Why? There were no profits for their stockholders.

So area residents organized to provide the wonder of electricity themselves.

New Enterprise Rural Electric Cooperative, Inc. (New Enterprise REC), a not-for-profit business, was established by members to serve members.

The territory served by New Enterprise REC is divided into eight director areas. Each area has a near equal amount of consumer-members and is represented by a director.

The eight-member board of directors acts as trustees on behalf of the cooperative's consumer-members. Directors ensure your cooperative is operating in your best interest. Today, the election of directors is still a very important part of every annual meeting.

When you become a consumer-member of New Enterprise REC, you share in the benefits and responsibilities of the cooperative. You have a say in how this utility operates.

New Enterprise REC doesn't have stockholders who are interested in lining their pockets. The cooperative's main concern is providing reliable electric service at the lowest cost possible.

As a consumer-member of the cooperative, you are eligible to run for director. The areas up for re-election this year are Areas 4 and 6. Directors currently representing these areas are: Leroy D. Walls in Area 4 since 2000 and Harry K. Johnson in Area 6 since 1988.


Area 4 can be described as Liberty Township in Bedford County along Route

26, Pinchot Road, Ravers Gap Road, Raven Run Road, Sugar Camp Road and Manspeaker Road. Also in Hopewell Township, Bedford County, along Farmers Valley Road, Marble City Road, Yellow Creek Drive, Jacks Corner Road, north end of Piper Hill Road, Plank Road from Yellow Creek to Foor Road and Polecat Hollow Road.

Area 6 can be described as portions of Hopewell, Broad Top and West Providence townships in Bedford County, including Cypher, the Beaches of: Mt. Rose, Locust, Cypher, Long Bend, Big Bend, Walnut and Hogback. Also included is Sherman Valley to Route 915 and into Wells Township, Fulton County, including Wells Tannery up to Moseby Road.

If you live full time in either of these areas and are interested in becoming a director candidate, contact or stop by the cooperative office and speak to Rick L. Eichelberger, general manager/CEO. Not sure which area you are located in? A detailed map is available at the office for your review.

If being a director doesn't appeal to you, you still have an important role in the operation of the cooperative. You can nominate other consumer-members for a director position.

The bylaws of the cooperative outline the qualifications and procedure for the selection of directors. There are certain time frames throughout the procedure that must be followed. The board of directors will select a Nominating Committee in March. The Nominating Committee will prepare a list of nominations and post it at the cooperative office by May 1. Any 15 or more consumer-members acting together may make additional nominations after the list is posted. Consumer-members attending the New Enterprise REC annual meeting may make additional nominations from the floor. 

New service fees effective January 15, 2009

Below is a list of some of our fees. This is not a complete list. If you are doing work to your underground or overhead lines, please call the office for these fees.

▶ Membership	\$5
▶ Security Deposit	125
▶ Member-Requested Disconnect	40
▶ Member-Requested Reconnect	40
NON-PAYMENT FEES	
▶ Collection Fee	125
▶ Disconnect	75
▶ Reconnect	75
▶ Reconnect between 3:30 and 7 p.m.	150
▶ Installation of Service Load Limiter	75
▶ Removal of Service Load Limiter	75
▶ Removal of Service Load Limiter between 3:30 and 7 p.m.	150
▶ Disconnect of a Three-Phase Account	150
▶ Reconnect of a Three-Phase Account	150
▶ Returned Check from Bank – Electronically or Hard Copy	30
▶ Missed Reads (fee to be charged when co-op needs to read a meter after two consecutive months of estimates)	25
▶ Meter Test	25
▶ Meter Tampering – 1st Offense	150
▶ Meter Tampering – 2nd Offense	300

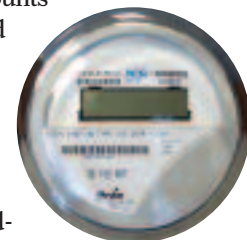
The meter-tampering fees will be charged plus the costs and estimated kilowatt-hours stolen when service is found tampered with. In addition, the account will be disconnected immediately and will not be reconnected until the above fees are paid, plus the total amount of the bill owed. An AMI will be installed and the State Police will be called to investigate.

All fees are subject to change without notice.

“Smart” meters

Should you read your meter? There has been some confusion about who needs to read their meter and who doesn't.

In 2008, we installed these new meters on seasonal rate accounts and randomly picked residential accounts. In January, we were installing “smart” meters on accounts that already had an automatic meter reading device (AMR) installed, plus a few other accounts.



Please continue to read your meter unless you are notified by the cooperative. When your meter is changed to a new “smart” meter, a door hanger will be left on your door. From that point on, you will not need to read your meter as the new meter will send the reading to us on the 25th of each month over the power lines.

We are planning on installing more of these meters in 2009, so watch for the door hangers.

Disconnection to resume

Collection of past due amounts continues throughout the winter months. New Enterprise REC does not disconnect meters during these cold months, but service load limiters are installed. A service load limiter limits the amount of electricity that can be used. Most importantly, a furnace can be used when a limiter is used.

Beginning April 1, 2009, it is a different story. New Enterprise REC will stop using service load limiters and start to disconnect accounts for non-payment again. Any account that has a 60-day or greater balance will be subject to disconnection on that day. These accounts will receive a notice in March, warning they will be disconnected on April 1. Should a limiter have been installed on an account and the cooperative member hasn't paid the required amount, the service will be disconnected on April 1.

When an account is disconnected or

limited, a meter reading is taken on that day. All use up to that point, the total due on the account and additional fees are required to be paid before service can be restored to normal. During business hours, payment can be made by debit or credit card, cash or money order. After hours, only cash or money orders are accepted.

New Enterprise REC doesn't want to disconnect any account. We would prefer to work with a consumer-member to get his or her account paid in full. If you are unable to pay the full past-due balance before the disconnect date, call our office and speak with Brawna to set up a payment agreement. We will do all we can so you aren't without electricity, although the full responsibility falls on the consumer-member. Members having difficulty paying their electric bill need to contact Brawna and set up the agreement. Once the agreement is in effect, it must be followed as stated or disconnection will occur.

Agreements must be signed by all persons on the membership. Be sure to allow enough time to get the agreement to you and then to get it back in our office before the disconnect date.

If you are unable to pay your bill, you may wish to contact your county Energy Assistance office. These offices are scheduled to close on March 31, 2009, so don't delay calling. The telephone numbers of these agencies are:

Bedford County Energy Assistance
814/623-6127 or 800/542-8584

Fulton County Energy Assistance
717/485-3151 or 800/222-8563

Huntingdon County Energy Assistance
814/643-1170 or 800/237-7674

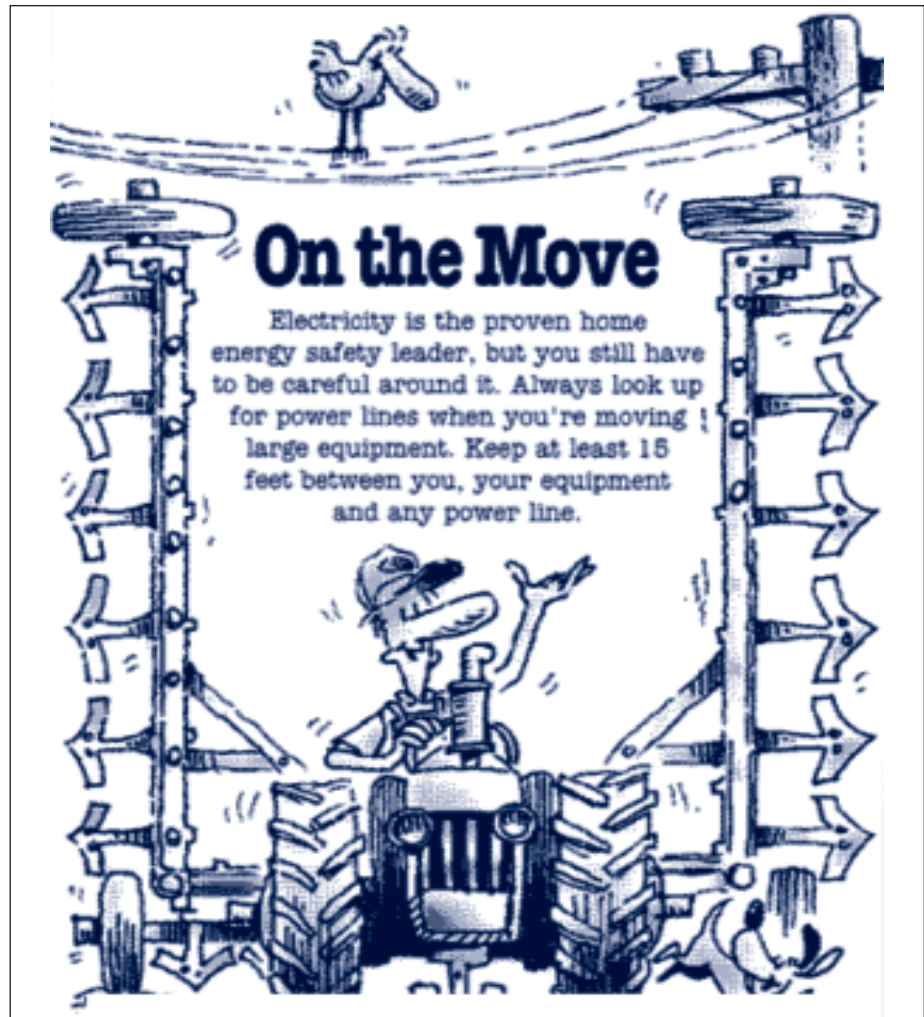
Even out those high bills with Budget Billing

Does your bill fluctuate between seasons? Why not try our Budget Billing program?

With Budget Billing, the computer looks back at your electricity use during the past 12 months, averages it and rounds it to the nearest \$10. So you pay

the same amount year round. Now your budget amount may change if your electricity use changes, but normally the change isn't very much. Since your bill continues to be averaged each month, there is no catch-up month.

For more information about Budget Billing, please contact our office and speak to one of our employees. ☀



Stories needed...

Do you know someone who has an interesting hobby or talent (it can even be you) or does your family have a tradition that you would like to share with others?

We are looking for story ideas for future *Penn Lines* editions. If you would like to share your ideas, please contact Brawna at P.O. Box 75, New Enterprise, PA 16664-0075; by phone at 814/766-3221 or 800/270-3177, extension 224, or by email at bsell@newenterpriserec.com.

The cooperative reserves the right to reject any topic.



2008 Writing Contest winner

This month, Kidz Korner is featuring the story written by Nancy Reiff Zimmerman for our 2008 Writing Contest. Nancy was the second-place winner. Her story is entitled: "Treed by a Bear."

"Treed by a Bear" by Nancy Reiff Zimmerman

It was the year of 1807 and Mark Williams lived in a small log cabin with his family in the great woods of Wisconsin.

Mark had two sisters who helped with the cooking and housekeeping.

John Williams, Mark's father, trapped and hunted for meat, for wild animals were plentiful.

Mark was 15 and old enough to handle a gun, and he helped his father hunt.

One day in late autumn, Mark's father had to work on fixing the cabin roof before winter came. Mark was to go and get a deer to butcher and store away for the long cold months.

After breakfast he set out, with faithful Jack at his side. After walking for about a mile in search of game, he came across some huge freshly made bear tracks. Since they were made just a while ago, he turned in another direction for he didn't want to meet with that bear.

After tramping another mile or so, he stopped and listened intently. When hearing nothing, he went on. He hadn't gone far when he heard a crashing in the underbrush. Jack growled. Mark stood tense, ready to spring for safety. At that moment, a gigantic, angry-looking grizzly bear emerged from the thickets. He growled and went straight for Mark!

Mark ran for a large tree and quickly climbed up for he knew he couldn't outrun an angry grizzly. Suddenly, he remembered bears can climb, too, and he shook with fear as the furious animal started up.

The boy climbed up higher, then remembered his gun. Why hadn't he thought of it before?

He took careful aim and shot. The bullet hit the bear's foreleg, which prevented him from climbing up. Mark sighed with relief, but how would he ever get down? The bear settled down on a branch glaring up at him with those little red eyes.

Mark tried again to shoot, but missed and then accidentally dropped the gun. He watched in horror as it fell and struck the bear's nose, and then fell to the ground with a thud. The grizzly woofed in surprise and made another attempt to climb, but the injured leg kept him from doing so.

Hours passed. Just when Mark thought he couldn't bear the hunger any longer, a loud crack broke the silence and the strained branch the bear had been on gave way. The bear fell down – down about five feet – and hit the ground with a dull thud. The surprised animal was still for some time till Mark thought he was dead, but he was just stunned and soon slowly got to his feet. He sat at the foot of the tree and more time passed.

Not till sunset did the bear finally wander away. Mark waited some more, then climbed down. He was weak with hunger and had cramps from sitting in the tree so long. He picked up his gun and hurried toward home glancing back and forth nervously from time to time. This time he kept his gun ready to use if the bear should appear again.

He was glad when he reached the cabin. And after that adventurous day, he didn't go hunting alone again.